

RUSSELL SAGE WILDLIFE MANAGEMENT AREA NORTH

NOVEMBER 2023

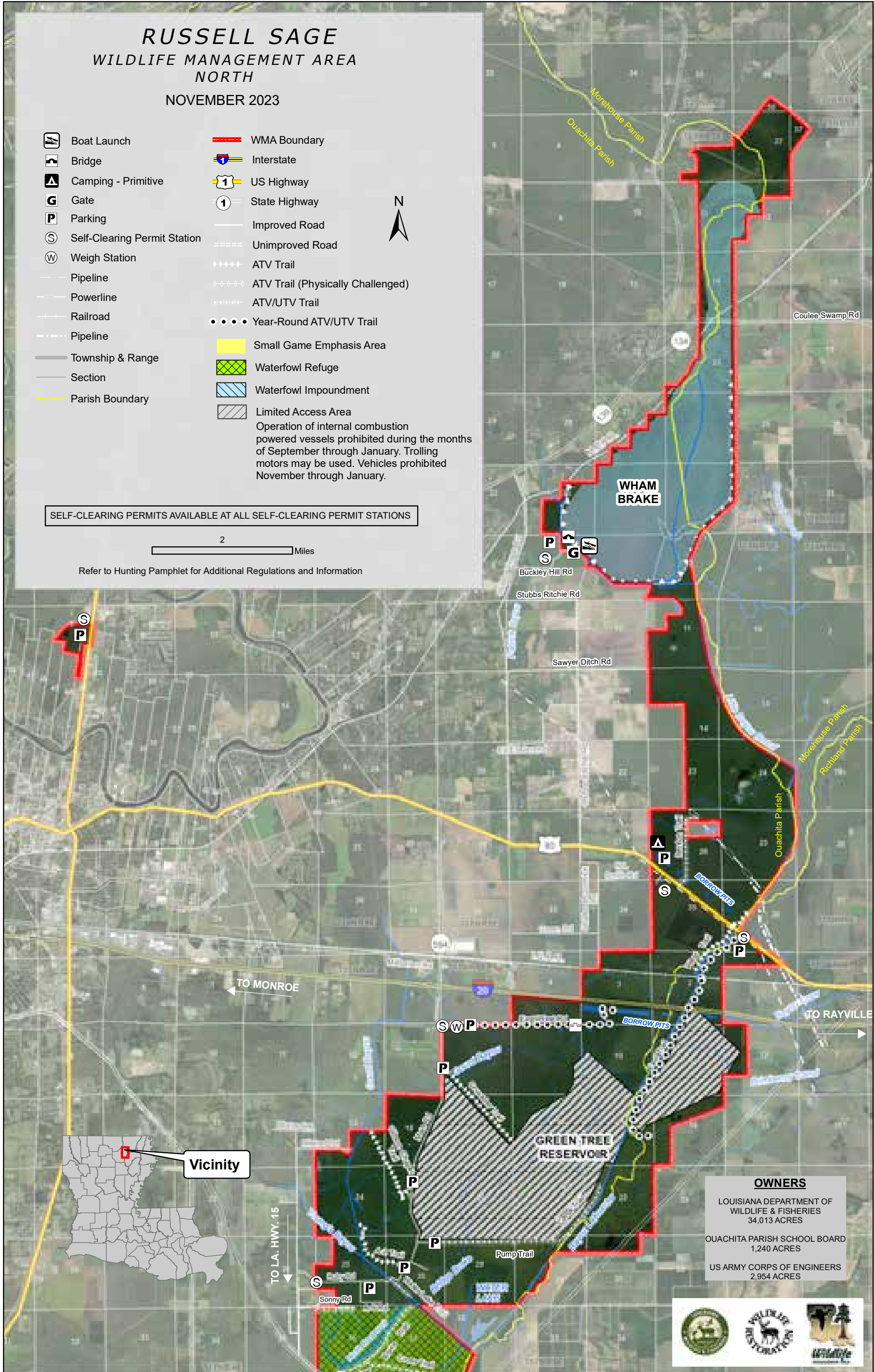
- | | | | |
|--|------------------------------|--|-----------------------------------|
| | Boat Launch | | WMA Boundary |
| | Bridge | | Interstate |
| | Camping - Primitive | | US Highway |
| | Gate | | State Highway |
| | Parking | | Improved Road |
| | Self-Clearing Permit Station | | Unimproved Road |
| | Weigh Station | | ATV Trail |
| | Pipeline | | ATV Trail (Physically Challenged) |
| | Powerline | | ATV/UTV Trail |
| | Railroad | | Year-Round ATV/UTV Trail |
| | Pipeline | | Small Game Emphasis Area |
| | Township & Range | | Waterfowl Refuge |
| | Section | | Waterfowl Impoundment |
| | Parish Boundary | | Limited Access Area |



SELF-CLEARING PERMITS AVAILABLE AT ALL SELF-CLEARING PERMIT STATIONS

2 Miles

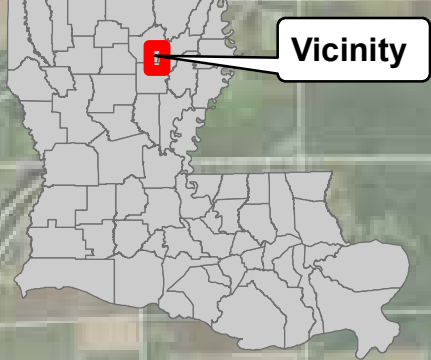
Refer to Hunting Pamphlet for Additional Regulations and Information



OWNERS
 LOUISIANA DEPARTMENT OF WILDLIFE & FISHERIES
 34,013 ACRES
 OUACHITA PARISH SCHOOL BOARD
 1,240 ACRES
 US ARMY CORPS OF ENGINEERS
 2,954 ACRES



**RUSSELL SAGE
WILDLIFE MANAGEMENT AREA
SOUTH**
NOVEMBER 2023



Vicinity

Hogs and Bears Look Alike
Know Your Target!



IT IS A VIOLATION OF STATE LAW
TO KILL A BEAR, WITH FINES UP
TO \$10,000, LOSS OF HUNTING
PRIVILEGES, AND/OR JAIL.

CASH REWARDS
FOR INFORMATION LEADING TO THE
ARREST OF PERSONS HARBORING A
LOUISIANA BLACK BEAR

1-800-442-2511

YOU WILL REMAIN ANONYMOUS

for more information call the Louisiana Department
of Wildlife and Fisheries at 337-343-8044.



LDWF makes no representations or warranties whatsoever, whether express, implied, statutory or otherwise, as to the quality and accuracy in producing this map or data set. The Louisiana Department of Wildlife and Fisheries (LDWF) has made every able effort to ensure quality and accuracy in producing this map or data set. Nevertheless, the user should be aware that the information on which it is based may have come from any of a variety of sources, which are of varying degrees of accuracy. Therefore, LDWF cannot guarantee the accuracy of this map or data set, and shall not be liable to any other person, party, or entity as a result of any reliance on this map or data set and/or any information contained herein or interpreted herefrom. Further, LDWF does not accept any responsibility for the consequences of its use.

- Camping - Primitive
 - Gate
 - Headquarters
 - Observation Tower
 - Parking
 - Self-Clearing Permit Station
 - Weigh Station
 - Pipeline
 - Powerline
 - Railroad
 - Pipeline
 - Township & Range
 - Section
 - Parish Boundary
 - US Highway
 - State Highway
 - Improved Road
 - Unimproved Road
 - ATV Trail
 - ATV Trail (Physically Challenged)
 - ATV/UTV Trail
 - Year-Round ATV/UTV Trail
 - ATV/UTV Trail (Open Nov 15-Jan31)
 - WMA Boundary
 - Small Game Emphasis Area
 - Waterfowl Refuge
 - Waterfowl Impoundment
 - Limited Access Area (Open to Small Game Hunting - Archery Only for Deer Hunting-Waterfowl Hunting)
 - Limited Access Area
- Operation of internal combustion powered vessels prohibited during the months of September through January. Trolling motors may be used. Vehicles prohibited November through January.

Refer to Hunting Pamphlet for
Additional Regulations and Information

**SELF-CLEARING PERMITS AVAILABLE AT
ALL SELF-CLEARING PERMIT STATIONS**

N
↑
OWNER

LOUISIANA DEPARTMENT OF
WILDLIFE & FISHERIES
34,013 ACRES
OUACHITA PARISH SCHOOL BOARD
1,240 ACRES
US ARMY CORPS OF ENGINEERS
2,954 ACRES

2
————— Miles